

**The 3rd International Conference  
on Mathematics and Science  
Education (ICoMSE) 2019**  
**Strengthening Mathematics and Science Education  
Research for the Challenge of Global Society**

---

Malang, Indonesia • 26–28 August 2019

**Editors** • Habiddin Habiddin, Sheikha Majid, Suhadi Ibnu,  
Nani Farida and I. Wayan Dasna



# The analysis of student epistemic games reviewed from physics understanding

Cite as: AIP Conference Proceedings 2215, 030012 (2020); <https://doi.org/10.1063/5.0000516>  
Published Online: 01 April 2020

M. Dewi Manikta Puspitasari, Lilia Sinta Wahyuniar, and Anita Sari Wardani



View Online



Export Citation

Lock-in Amplifiers  
Find out more today



MFL Lock-in Amplifier  
100kHz / 5MHz  
100MHz

Zurich Instruments

The image shows a Zurich Instruments MFL Lock-in Amplifier. It is a blue, rectangular device with a white front panel. The front panel features several ports and labels: 'Signal Input' with sub-labels '-V DIFF', '+V', and '+V'; 'Signal Output' with sub-labels '-V DIFF', '+V', and '+V'; 'Aux Input' with sub-labels '1', '2', and '3'; and 'Aux Output' with sub-labels '1', '2', and '3'. There are also labels for '100kHz', '5MHz', and '100MHz'. The Zurich Instruments logo is visible on the top left of the front panel.



# The Analysis of Student Epistemic Games Reviewed from Physics Understanding

M. Dewi Manikta Puspitasari<sup>1, a)</sup>, Lilia Sinta Wahyuniar<sup>2</sup>, and Anita Sari Wardani<sup>3</sup>

<sup>1</sup>*Electrical Engineering, Faculty of Engineering, Universitas Nusantara PGRI Kediri, Indonesia*

<sup>2</sup>*Computer Science, Faculty of Engineering, Universitas Nusantara PGRI Kediri, Indonesia*

<sup>3</sup>*Information Systems, Faculty of Engineering, Universitas Nusantara PGRI Kediri, Indonesia*

<sup>a)</sup> Corresponding author: dewimanikta@gmail.com

**Abstract.** Epistemic game is able to show the relationship of students' understanding concerning problem solving by developing students' intellectual. The aim of the research is to determine epistemic game of high physics-capable students in solving electrical circuit problems. This research is qualitative research. The participant of the research is the students who learn electrical circuit. Test and interview are used by the researcher to collect data. The test is consisted of physics understanding test and electrical circuit test. Physics understanding test is used to determine the level of students' physics understanding, while the electrical circuit test is used to determine students' epistemic game to solve the problems. The research finding showed the epistemic game of high physics-capable students was obtained from analysis result of electrical circuit test and interview. The analysis result of the first test and the third test showed that the game used to solve problems was physical mechanism, mapping meaning to mathematics, and transliteration to mathematics. In the second test, the students used physical mechanism, pictorial analysis, mapping meaning to mathematics, and transliteration to mathematics in solving problems. Meanwhile, the students used mapping mathematics to meaning and pictorial analysis to solve the problems in the fourth test, fifth test, and eighth test. The analysis result of sixth test showed that the students used mapping meaning to mathematics and transliteration to mathematics to solve the problems. Furthermore, the seventh test was completed by transliteration to mathematics, physical mechanism, and recursive plug and chug. Epistemic game of this research can be used to determine learning strategy or model which is compatible with learning material concepts.

## INTRODUCTION

Students' understanding and experience have big role in the problem-solving process. Application of problem-solving strategy is not affected by qualitative or quantitative. Besides, the students use conceptual and mathematical reasoning in generating problem solving solutions [1]. Learning development must be based on the cognitive process and description about how to represent knowledge and develop students' competence. The elaboration of cognitive process to solve physics problem needs compatible model. Cognitive process is occurred in students thought when they solve physics problem. The students who have equal ability in managing information will achieve good achievement in learning [2]. Meanwhile, the students who have equal ability in organizing information will have an unfavorable achievement. Therefore, it is necessary to create learning environment which is able to make the students balancing their ability. In forming the students' understanding and providing information to solve a problem are depended on the education purposes in articulating the problem selection and design [3].

From the students' point of view, to develop students' ability in solving structural problems, firstly, they have to believe that standard procedural approach will not always enough to solve scientific challenges. Development and strengthening the students' problem-solving ability require approach in the form of compatible challenges. Besides, organized understanding can be used to analyze problems qualitatively and to plan possible solutions to monitor students' ability progress [4]. It shows that problem-solving strategy (epistemic game) of the student is less developed. The development of this strategy requires explicit discussion in the teaching-learning process.

The relationship of the students' thought and their ability shows that the students have equal understanding concerning problem solving in physics [5]. Epistemic game is able to show the relationship of students understanding about problem solving by developing their intellectual [5]. Every student has different epistemic game to solve problems. It is depended on their knowledge and understanding. Besides, the presented problems can also influence the students' thought. When difficult problems were given to the students, presentation of equation is needed to help them in solving presented problems. Therefore, compatible learning strategy is needed to develop problem solving for electrical circuit. Furthermore, problem solving strategy (epistemic game) will develop a learning which can stimulate a completion of physics.

There are still many misconceptions and difficulties in understanding electrical circuit. It is showed by the lack of development of the electric circuit concept. Most of the students only used laboratory work which is already ineffective. Forming a discussion team also has positive affect to students' physics ability. Misconceptions and difficulties in learning electrical circuit include the basic concept and the circuit of the electric circuit itself [6]. Hence, the students need learning strategy which is compatible to develop electrical circuit problems completion. Additionally, problem solving strategy (epistemic game) will develop a learning which can stimulate a completion of physics. This case encourages the researcher to determine epistemic game of high physics-capable students in solving electrical circuit problems. The result of the research can be used as a reference in developing method or physics learning strategy in order to ease the misconception of the concept which makes the students bias in understanding the concept.

## METHOD

This research is qualitative research. Data collection of qualitative research used interview, electrical circuit tests, and physics understanding test. It was used to determine epistemic game of high physics-capable students in solving electrical circuit problems. Epistemic game was determined by the students' answer to 8 electrical circuit problems which are given to them. Then, it is analyzed using identification rubric of epistemic game.

### Research Participants

The participant of the research is the students who learns electrical circuit (consist of 9 students of Electrical Engineering and 4 students of Industrial Engineering), Engineering Faculty of Universitas Nusantara PGRI Kediri. High physics-capable students (8 moderately capable students out of 13 students) based on their physics understanding test results. Students' physics understanding are grouped based on the criteria listed in TABLE 1 as follows;

**TABLE 1.** Grouping Criteria of Students' Physics Understanding

Physics Score (PS)	Understanding Level
$75 \leq PS \leq 100$	High
$60 \leq PS < 75$	Moderate
$0 \leq PS < 60$	Low

### Technique of Collecting Data

Data collection technique was conducted using two techniques, they are as follow;

#### Test

The test used in this research was physics understanding test (the problem was consisted of 10 basic physics material questions) and electrical circuit test (the problem was consisted of 8 replacement resistance and electrical circuit questions).

## **Interview**

The interview of this research was based on the test. It was conducted to obtain clear data concerning students' epistemic game in completing electrical circuit test. The interview was provided for all students who have high understanding in completing electrical circuit test.

## **Technique of Analyzing Data**

Data analyzing technique of this research had three stages, they were data reduction, data presentation, and conclusion [7]. The explanations are;

### **Data Reduction**

Reduction of data within this research consist of activities which involve process of selecting data (epistemic game data or not) based on the relevance level and its relation with each group of game data. In addition, it focused on the data entered to epistemic game data, simplified raw data of epistemic game in the field in the form of game data group, made abstract, and transforms data obtained into general epistemic game data. The activities of the data reduction were started by reading, learning and understanding all of obtained data.

### **Data Presentation**

In this research, data representation consist of grouping activity based on criteria for grouping students' physics abilities presented in TABLE 1, and data identification conducted by writing organized and categorized data collection, then it can be possible to make a conclusion. The aimed of data presentation activity is to make conclusion easily.

### **Conclusion**

Conclusion is giving a meaning and explanation to data presentation outcome. Next, conclusion in this research is showed to formulate students' problem-solving strategy in completing electrical circuit. Conclusion is obtained based on the data presentation.

### **Research Roadmap**

The research roadmap is presented on the following Fig. 1;

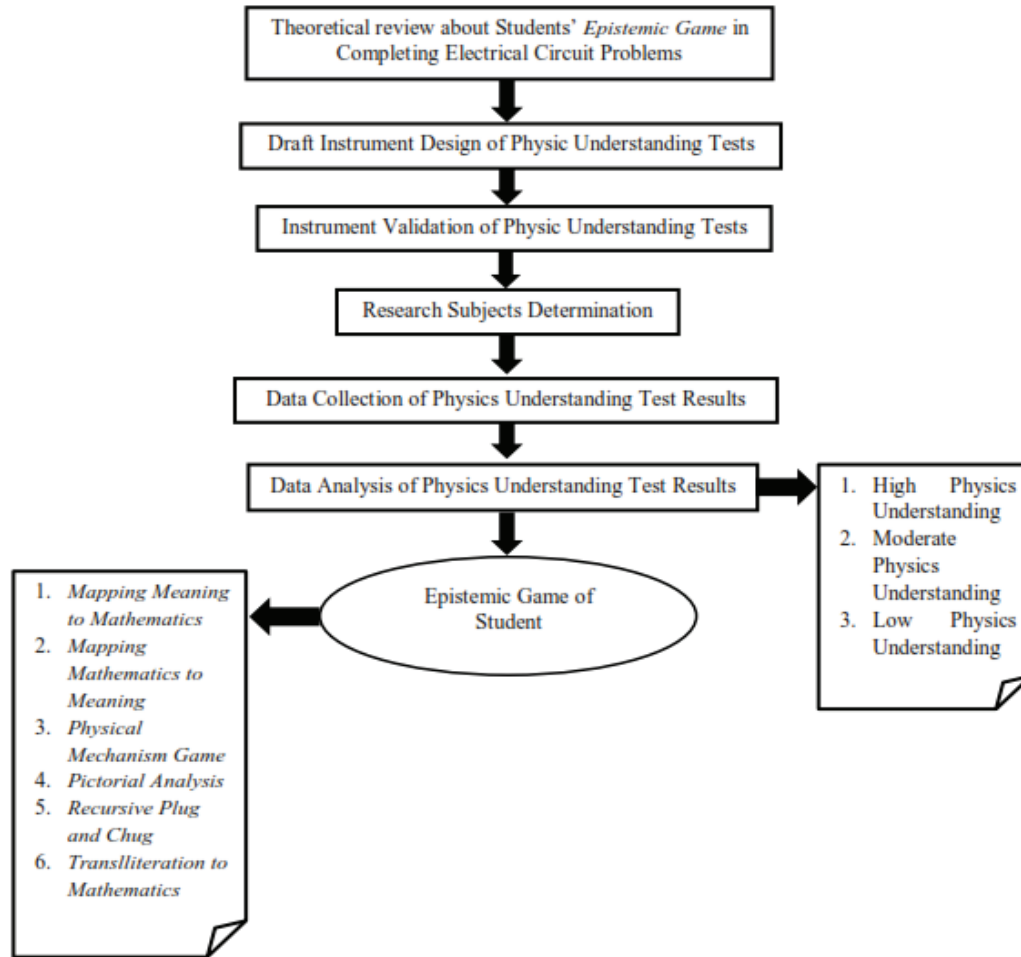


FIGURE 1. Research Roadmap

## RESEARCH FINDING AND DISCUSSION

High physics-capable students include eight students. Epistemic game distribution of high physics-capable students in completing electrical circuit problems provided in TABLE 2.

TABLE 2. Epistemic game distribution of high physics-capable students in completing electrical circuit problems

Student	Test							
	1	2	3	4	5	6	7	8
M1	PM	TM	PM	MMM2	MMM2	MMM1	PM	PA
M3	PM	MMM1	PM	MMM2	MMM2	MMM1	TM	PA
M4	MMM1	PM	PM	PA	PA	MMM1	TM	MMM2
M5	MMM1	MMM1	MMM1	PA	MMM2	TM	RPC	PA
M6	PM	PA	PM	MMM2	MMM2	TM	TM	MMM2
M7	PM	MMM1	PM	MMM2	PA	MMM1	TM	PA
M8	TM	PM	TM	MMM2	MMM2	MMM1	TM	PA
M9	TM	TM	PM	MMM2	MMM2	TM	TM	PA

M = The Code of Student

MMM2 = Mapping Mathematics to Meaning

PA = Pictorial Analysis

TM = Transliteration to Mathematics

MMM1 = Mapping Meaning to Mathematics

PM = Physical Mechanism

RPC = Recursive Plug and Chug

High physics-capable students used epistemic game in solving electrical circuit problems. The explanations are; the students used physical mechanism in completing first and third test by drawing the circuits of each completion stage yet did not contain symbol, counting step by step, writing symbols (for determining R series or R parallel only). Other Epistemic games used to complete the first and third test was transliteration to mathematics. The students did the test neatly and straightly yet did not use formula or equation in solving the problems, in the game the students should count step by step. Mapping meaning to mathematics was also used to complete the first and third test. In this game, the students drew the circuits of each completion stage yet did not contain symbol, counted concisely, wrote symbols only for determining R series or R parallel.

The implementation of mapping meaning to mathematics as problem solving strategy in this research has not well developed yet. It is corresponding with the result of the research [5] which showed that second and third stage of this game was difficult to be developed. Second stage of this game is translating quantities into mathematical units, while the third stage connects mathematical units according to the physics. Second stage activates intuitive mathematical knowledge, symbolic form and interpretation equipment. Meanwhile, the third stage is depended on the intuitive mathematical knowledge, symbolic form and interpretation equipment. The second and third stages are epistemic form of mapping meaning to mathematics, then the students produce collection of mathematical symbols.

The students completed second test using mapping meaning to mathematics, they drew the circuits of each completion stage yet did not contain symbol, counted step by step, wrote symbols only for determining R series or R parallel. Physical mechanism was used to solve second test within the main circuits drawing yet did not contain symbol, counted concisely, wrote symbols only for determining R series or R parallel. In the transliteration to mathematics, the students counted step by step, wrote the symbols only for determining R series or R parallel. In addition, depiction of each completion stage circuits yet does not contain symbols, counts step by step, writes symbols only for determining R series or R parallel are used to pictorial analysis.

Those research findings can be explained that the students used some games to solve the problems. It was in accordance with the research [5] stating that specific resources and games were not the only way used or played by the students. Based on the research [5], cognitive model in solving problems (epistemic game) increases the understanding concerning problems which are learned by the students.

In the fourth, fifth, and eighth test, the students used mapping mathematics to meaning to solve the problems. In this game, the student counted by writing Kirchoff law in the beginning, gave a name for each loops, conducted substitution and elimination. Pictorial analysis was also used to complete fourth, fifth, and eighth test. It was the test where the students drew the main circuits by drawing the direction of each loop, counting by writing Kirchoff law, conducting substitution and elimination.

This research finding showed that the students completed the test by following the cognition process in solving the problems. The formation of student understanding and providing information to solve the problems were depended on the purpose of the education in articulating problem selection and design [3]. The students counted by writing law which was compatible with the problems, gave name to each loop, conducted substitution and elimination. The students developed conceptual story relating to physics equation in the game mapping mathematics to meaning [5]. The students started with a physics equation and developed conceptual story.

Furthermore, the students completed the sixth test using mapping meaning to mathematics. They drew the circuits of each completion stage yet did not contain any symbols, counted in this game. Transliteration to mathematics was used by the students to solve the problems existed within the test by counting step by step, writing symbols only for determining R series or R parallel.

The organized understanding can be used to analyze qualitatively and design a solution which has possibility to monitor advancement of student ability [4]. It shows that problem-solving strategy, i.e. Transliteration to mathematics, uses work sample to produce solutions without developing conceptual understanding. The students counted step by step, wrote symbols only for determining problem solving [5].

In the seventh test, the students, in completing electrical circuit problem, used transliteration to mathematics. In this case, the students did it neatly and in a row yet did not use formulation or equation in solving the problems, they tended to count quickly/concisely, and they did not use Wheatstone bridge equation. The students also used physical mechanism to complete the seventh test in drawing the circuit of Wheatstone bridge, undertake the problems neatly and in a row yet did not use formulation or equation in solving the problems, they tended to count quickly and concisely, they also did not use Wheatstone bridge equation. Meanwhile, the students who used recursive plug and chug to complete seventh test, they completed the test neatly and in a row, using formulation or equation in solving problems, tended to count step by step, and did not use Wheatstone bridge equation.

Yet, recursive plug and chug is rarely used by the students to solve their physics problems. In its implementation, the students do not identify and put a quantity into the equation. Epistemic form of recursive plug and chug is

identical with mapping meaning to mathematics. Recursive plug and chug relies on syntax understanding of physics symbols without trying to conceptually understand those symbols.

## CONCLUSIONS

The research can be concluded that epistemic games of high physics-capable students in solving electrical circuit problems are the result of the analysis. The analysis result of the first and the third test showed that the game used in solving the problems was physical mechanism, mapping meaning to mathematics, and transliteration to mathematics. In the second test, the students used physical mechanism, pictorial analysis, mapping meaning to mathematics, and transliteration to mathematics in solving problems. The students used mapping mathematics to meaning and pictorial analysis to solve the problems in the fourth test, fifth test, and eighth test. The analysis result of sixth test showed that the students used mapping meaning to mathematics and transliteration to mathematics to solve the problems. Meanwhile, the seventh test was completed by transliteration to mathematics, physical mechanism, and recursive plug and chug.

Epistemic game of this research can be used to determine learning strategy or model which is compatible with learning material concepts. This research is limited to epistemic game in the material concept of electrical circuit. Hence, extended research can be conducted on other material concepts, and learning model can also be applied to support learning material concepts.

## ACKNOWLEDGMENT

The researcher is very grateful to Ministry of Research, Technology and Higher Education of the Republic of Indonesia for funding this research.

## REFERENCES

1. Y. Chen, P.W. Irving and E.C. Sayre, [Physical Review Special Topics - Physics Education Research](#) **9**, 010108 (2013).
2. H. Bancong and Subaer, *Jurnal Pendidikan IPA Indonesia* **2**, 195-202 (2013).
3. R.E. Teodorescu, et.al., [Physical Review Special Topics - Physics Education Research](#) **9**, 010103 (2013).
4. C.A. Ogilvie, [Physical Review Special Topics - Physics Education Research](#) **5**, 020102 (2009).
5. J. Tuminaro and E.F. Redish, [Physical Review Special Topics - Physics Education Research](#) **3**, 020101 (2007).
6. M.D.M. Puspitasari, *Berkala Ilmiah Pendidikan Fisika* **5**, 88-98 (2017).
7. Mile and Huberman, *Qualitative Data Analysis* (SAGE Publications, London, 1994).